

WHAT'S ON	FRI 18	SAT 19	SUN 20	TUE 22	WED 23	THU 24
Friendship (15) <b>(AD)</b>	16.00 / 18.15 / 20.30	13.00 <b>(R)</b> / 17.45 / 20.45	15.00 / 17.45 / 20.00	<b>(S)</b> : 12.00 <b>(BK)</b> / 15.30 / 20.45	14.50 / 16.45 / 20.00	11.30 / 14.00 / 20.30
Four Letters of Love (15)	12.15 / 17.30	11.30 / 15.15 / 18.00	12.15 / 17.15	15.00 / 20.10	12.00 / 17.15	11.00 <b>(ED)</b> , 17.00
Harvest (18) <b>(AD)</b>	17.00	19.45	12.30	<b>(S)</b> : 20.00	17.30	17.45
Hot Milk (15) <b>(AD)</b>	14.45	20.00	20.00	<b>(S)</b> : 13.00	12.15	12.00
Mars Express (15) <b>(FL)</b>	14.50 / 20.15	13.30 / 20.15	18.00	13.15 / 18.15	15.15 / 19.45	12.30 / 20.00
The Ballad of Wallis Island (12A) <b>(AD)</b>	12.15 / 15.00	11.15 / 15.30	15.15 / 20.15	<b>(S)</b> : 12.30 / 15.30 / 17.45	12.15 / 14.30 / 17.20 / 20.15	14.30 / 17.30 / 19.45
The Other Way Around (12A) <b>(FL)</b>	12.10	15.00	-	15.00	12.30	14.45
<b>SPECIAL SCREENINGS</b>						
Showroom Classics: Barry Lyndon (12A)	12.00	12.15	15.30	-	19.00	-
In Dreams: Mulholland Drive (15)	19.45	16.30	19.30	-	-	17.15
Haneke: The Piano Teacher (18) <b>(FL)</b>	17.15	-	-	20.15	-	-
Kaijuly: The Wrath of Daimajin (12A) <b>(FL)</b>	20.00	18.00	12.00	-	-	-
The Iron Giant (PG) <b>(FT)</b>	-	11.00	-	-	-	-
Showroom Community: <b>SAHM</b> : Footprints on the Water (18)	-	-	12.15	-	-	-
<b>SFF</b> : Metropolitan 35mm + Whit Stillman Q&A	-	-	-	18.00	-	-
Haneke: Amour (12A) <b>(FL)</b>	-	-	14.30	-	-	20.15

**BK** - Baby Kino: Relaxed screenings for parents and babies (under one).

**ED** - Early Doors: Coffee, cake and the big screen, all for just £9 (for over 55s).

**FT** - Family Time: Relaxed, family-friendly screenings for £6.

**R** - Relaxed: Relaxed screenings of this month's biggest releases.

**AD** - Audio description available. **S** - Hard of hearing subtitles at all screenings.

**FL** - Foreign Language **SAHM** - South Asian Heritage Month **SFF** - Sheffield Film Festival

Showroom and the Café Bar will be **closed on Mondays** until the end of August. In this period, Baby Kino will move to Tuesdays and Early Doors to Thursdays.

# THIS WEEK AT showroom



Fri 18 - Thu 24 July

Image: Mulholland Drive

# THIS WEEK AT showroom

Join us for eclectic general releases, and classic films from legends like Lynch and Kubrick. Highly anticipated for fans of Tim Robinson, *Friendship* is set to become one of the best comedies of the year. Celebrating it's 50th anniversary

*Barry Lyndon* is one of Stanley Kubrick's great achievements; enjoy in stunning 4K restoration. Don't miss an insightful recorded director Q+A for South Asian Heritage Month, as well as an in person visit from iconic indie director Whit Stillman.



## The Iron Giant (PG)

Sat 19 Jul @ 11.00

Inspired by Showroom's KaiJury Raids Again! season, this month at Family Time we are celebrating all things big and scary.



## Classics: Barry Lyndon (12A)

From Fri 18 Jul

Ryan O'Neal and Marisa Berenson star in director Stanley Kubrick's lavish adaptation of the classic 18th-century novel.



## Four Letters of Love (12A)

From Fri 18 Jul

Fate contrives to pull the threads of their lives together. Starring Pierce Brosnan, Helena Bonham Carter and Gabriel Byrne.



## Friendship (15)

From Fri 18 Jul

Suburban dad Craig (Tim Robinson) falls hard for his charismatic new neighbour (Paul Rudd).



## South Asian Heritage Month: Footprints on Water (18\*)

Sun 20 Jul @ 12.15

Featuring a special introduction by ReelN and a recorded director Q+A. Part of Showroom Community.



## SFF: Metropolitan - 35mm + Whit Stillman Q&A (15)

Tue 22 Jul @ 18.00

The Oscar-nominated indie gem on 35mm. Followed by an in-person Q&A with director Whit Stillman.



## Kaijuly Raids Again: The Wrath of Daimajin (12A)

Fri 18 / Sat 19 / Sun 20 Jul

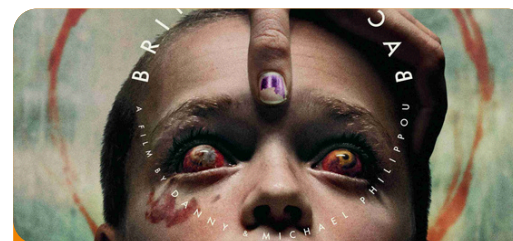
Kaijuly Raids Again! brings us an epic Samurai tale set in the mountains.



## Harvest (18)

From Fri 18 Jul

Over seven hallucinatory days, a village with no name, in an undefined time and place, disappears.



## NEXT WEEK... Previews - Bring Her Back (18)

From Sat 26 Jul

*Bring Her Back* is the highly anticipated new film from the directors of horror hit *Talk to Me*.

showroom  
cinema

For full programme details and to book your tickets please visit:  
[showroomcinema.org.uk](https://showroomcinema.org.uk)

Find us on social media:



Registered charity no. 1002020